

CIBSE

LIG053
LIG054
LIG058
LIG910
LIG953
LIG9004

DARAY[®]
Medical

Product Datasheet

Examination Light

X740

LED



Introduction

The DARAY X740 LED examination light is both powerful and incredibly flexible, featuring variable colour adjustment. Utilising LED technology, the general examination light has been developed to provide an intense beam with excellent colour rendering properties.

The X740 LED forms part of the **X700 LED Range**, which comprises the following models: X700, X710, X730, X740.

All models in the X700 LED Range offer identical light output, though with differing mounting/wiring options:

X700 - Same as X740, though with a flexible 'gooseneck' instead of the articulated (spring-balanced) arm.

X710 - Available as a wall/rail mount solution with an integrated transformer, to be hardwired.

X730 - Provides a panel mount bracket and an angled neck for mounting to bed-head trunking, to be hardwired.

X740 - Same as X700, though with an articulated (spring-balanced) arm instead of the flexible 'gooseneck'.

Datasheets are available for each model in this Range.

Standard Features

- World-renowned LED technology
- Variable intensity
- Variable colour temperature
- Spring-balanced arms for versatile movement and solid positioning
- Excellent colour rendering
- A strong beam of light with an even intensity across the entire area for clearer viewing and reduced eye strain
- Fully positionable light head, and telescopic ceiling tube for extra reach
- Energy-efficient, environmentally friendly, and a fully recyclable product

Available Options

X740LC	DARAY X740 LED ceiling mounted examination light
X740LW	DARAY X740 LED wall mounted examination light
X740LR	DARAY X740 LED rail mounted examination light (rail sold separately - see XRAIL below)
X740LD	DARAY X740 LED desk clamp examination light
X740LDS	DARAY X740 LED desk stand examination light
X740LFDM	DARAY X740 LED fixed desk mount examination light
X740LM	DARAY X740 LED mobile examination light
X740LE1	DARAY X740 LED hardwired BESA wall mount examination light (special order)
X740LE2	DARAY X740 LED hardwired wall mount examination light (special order) - with separate transformer
X740LE3	DARAY X740 LED hardwired panel mount examination light (special order) - with separate transformer
X740LE4	DARAY X740 LED hardwired wall mount examination light (special order) - with integral transformer
XRAIL	1m Medical Rail for mounting X740LR (includes wall fixings)
XBB24	Battery back-up options available, please call

Technical Specifications

Light Source	LED
Light Intensity (Lux) @ 0.5m	80,000 Lux \pm 5%
Light Intensity (Lux) @ 0.75m	40,000 Lux \pm 5%
Light Intensity (Lux) @ 1.0m	20,000 Lux \pm 5%
Light Intensity Adjustment Range	25 - 100%
Colour Temperature (Kelvin)	3,600K - 5,000K (\pm 500K)
Colour Rendering Index (CRI)	95
Colour Rendering (R9)	95
Light Field Diameter (D50)	@ 0.5m: 60mm
	@ 0.75m: 90mm
	@ 1.0m: 120mm
Light Field Diameter (D10)	@ 0.5m: 110mm
	@ 0.75m: 150mm
	@ 1.0m: 200mm
Number of LED's	4
Power Consumption	16W 0.14A
Average Working Life	>40,000 Hours
Input Supply Rating	100 - 240V AC 50/60 Hz
Output Supply Rating	12V DC 1A
Temperature Rise on Patient/User	\leq 2°C
Warranty Period	5 Years
NHS E-Class Code	FBU, FKR
Commodity Code	9018 908400
GMDN Code	12276

Notes

Our X700 Range is available with a wide array of mounting options to ensure your light is exactly where you need it. Available in two arm options (flexible gooseneck or spring-balanced arm) and a large range of plug-top and hardwired mounting options to suit all clinical needs.

This model features a low total cost of ownership, costing up to 75% less to run than equivalent halogen lights. This light has around 40,000 hours of life from the LED light engine equating to around 20 years of clinical use. The X700 Range requires minimal maintenance and is an ideal light for GP surgeries and clinics where flexibility and performance are crucial.

Medical Approvals/Certificates

The product(s) on this datasheet adhere to the following standards in line with the 93/42/EEC Medical Devices Directive - Classification: Class 1, Rule 1.

EN 13485	EN 60601-1-2
EN 14971	EN 60601-2-41
EN 9001	EN 60601-1-6
EN 60601-1	EN 1041
2014/35/EU Low Voltage Directive	EN 60598-2-25

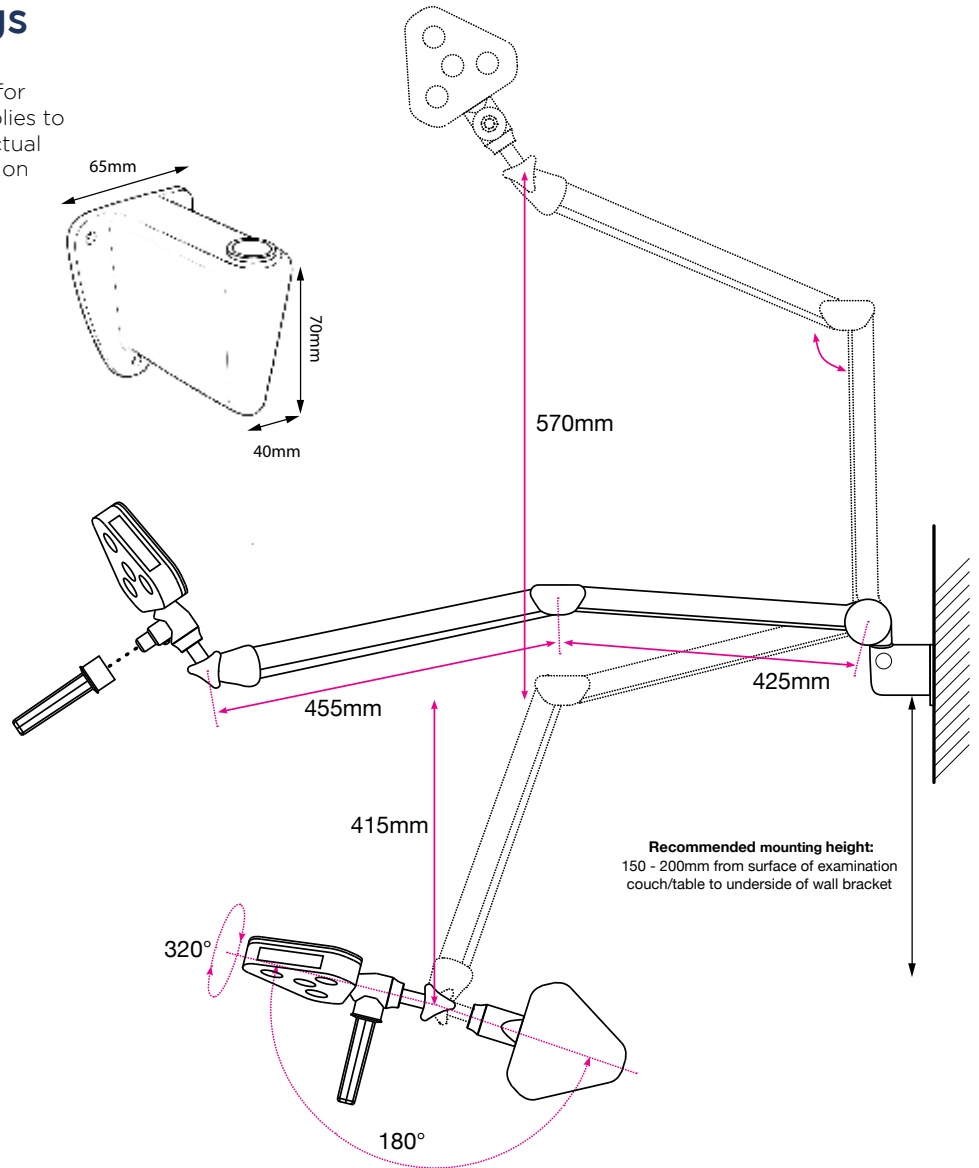
Technical Drawings

Recommended mounting height shown for the wall mounted version below, this applies to the desk and rail mount versions also. Actual mounting location should be dependent on intended use and desired reach.

Common sense should always prevail.

X740 LED Wall Mount

Total weight: 1.85kg
Same dimensions apply for all other versions



Mounting Options

These are DARAY's standard mounting options, and are all interchangeable.



Shown here are the hardwired special order mounting options, and are **not interchangeable**.



Image Gallery continued..

X740 LED Wall Mount
Code: X740LW



X740LW supplied with plug-top transformer.

X740 LED Hardwired Wall Mount with integral transformer
Code: X740LE4



Transformer housed in box at base of neck. Box mounts directly to the wall.



Code: X740LE1



Code: X740LE2



Code: X740LE3



Code: X740LDS

X740 LED Ceiling Mount
Code: X740LC



300mm ceiling tube extension feature



Digital control panel
Features: Power on/off
Light intensity adjustment
Colour temp adjustment

Removable autoclavable handle

Max. Height 1700mm



Left:
X740 LED Mobile
Code: X740LM



Right:
X740 LED Rail Mount
Code: X740LR
(shown here on XRAIL Medical Rail - available separately)