

CIBSE

LIG053
LIG054
LIG058
LIG910
LIG953
LIG9004

X
SERIES

Product Datasheet

DARAY[®] | **X7**
Medical

X740 LED Exam Light

Introduction

The DARAY X7 examination light is both powerful and incredibly flexible, featuring variable colour adjustment. Utilising LED technology, the general examination light has been developed to provide an intense beam with excellent colour rendering properties.

The X740 forms part of the **X7 Series**, which comprises the following models: X700, X710, X730, X740.

All models in the X7 Series offer identical light output, though with differing mounting/wiring options:

X700 - Same as X740, though with a flexible 'gooseneck' instead of the articulated (spring-balanced) arm.

X710 - Available as a wall/rail mount solution with an integrated transformer, to be hardwired.

X730 - Provides a panel mount bracket and an angled neck for mounting to bed-head trunking, to be hardwired.

X740 - Same as X700, though with an articulated (spring-balanced) arm instead of the flexible 'gooseneck'.

Datasheets are available for each model in the X7 Series.

Standard Features

- World-renowned LED technology
- Variable intensity
- Variable colour temperature
- Spring-balanced arms for versatile movement and solid positioning
- Excellent colour rendering
- A strong beam of light with an even intensity across the entire area for clearer viewing and reduced eye strain
- Fully positionable light head, and telescopic ceiling tube for extra reach
- Energy-efficient, environmentally friendly, and a fully recyclable product

Available Options

X740LC	DARAY X7 ceiling mounted LED examination light
X740LW	DARAY X7 wall mounted LED examination light
X740LR	DARAY X7 rail mounted LED examination light (rail sold separately - see XRAIL below)
X740LD	DARAY X7 desk clamp LED examination light
X740LDS	DARAY X7 desk stand LED examination light
X740LFDM	DARAY X7 fixed desk mount LED examination light
X740LM	DARAY X7 mobile LED examination light
X740LE1	DARAY X7 hardwired BESA wall mount LED examination light (special order)
X740LE2	DARAY X7 hardwired wall mount LED examination light (special order) - with separate transformer
X740LE3	DARAY X7 hardwired panel mount LED examination light (special order) - with separate transformer
X740LE4	DARAY X7 hardwired wall mount LED examination light (special order) - with integral transformer
XRAIL	1m Medical Rail for mounting X740LR
XBB24	Battery back-up options available, please call

Technical Specifications

Light Source	LED
Light Intensity (Lux) @ 0.5m	80,000 Lux \pm 5%
Light Intensity (Lux) @ 0.75m	40,000 Lux \pm 5%
Light Intensity (Lux) @ 1.0m	20,000 Lux \pm 5%
Light Intensity Adjustment Range	25 - 100%
Colour Temperature (Kelvin)	3,600K - 5,000K (\pm 500K)
Colour Rendering Index (CRI)	95
Colour Rendering (R9)	95
Light Field Diameter (D50)	@ 0.5m: 60mm
	@ 0.75m: 90mm
	@ 1.0m: 120mm
Light Field Diameter (D10)	@ 0.5m: 110mm
	@ 0.75m: 150mm
	@ 1.0m: 200mm
Number of LED's	4
Power Consumption	16W 0.14A
Average Working Life	>40,000 Hours
Input Supply Rating	100 - 240V AC 50/60 Hz
Output Supply Rating	12V DC 1A
Temperature Rise on Patient/User	\leq 2°C
Warranty Period	5 Years
NHS E-Class Code	FBU, FKR
Commodity Code	9018 908400
GMDN Code	12276

Notes

Our X7 Series is available with a wide array of mounting options to ensure your light is exactly where you need it. Available in two arm options (flexible gooseneck or spring-balanced arm) and a large range of plug-top and hardwired mounting options to suit all clinical needs.

This model features a low total cost of ownership, costing up to 75% less to run than equivalent halogen lights. This light has around 40,000 hours of life from the LED light engine equating to around 20 years of clinical use. The X7 Series requires minimal maintenance and is an ideal light for GP surgeries and clinics where flexibility and performance are crucial.

Medical Approvals/Certificates

The product(s) on this datasheet adhere to the following standards in line with the 93/42/EEC Medical Devices Directive - Classification: Class 1, Rule 1.

EN 13485

EN 14971

EN 9001

EN 60601-1

2014/35/EU Low Voltage Directive

EN 60601-1-2

EN 60601-2-41

EN 60601-1-6

EN 1041

EN 60598-2-25

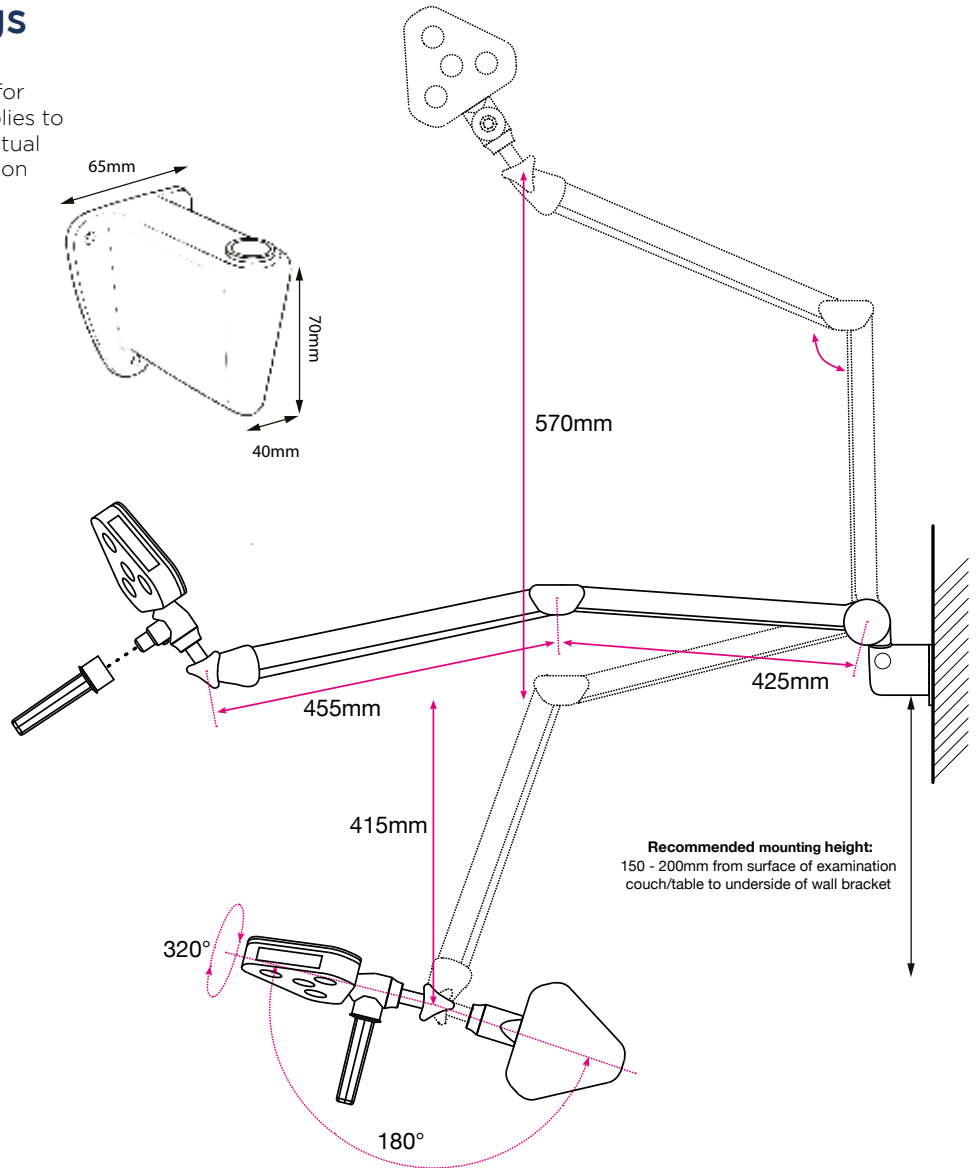
Technical Drawings

Recommended mounting height shown for the wall mounted version below, this applies to the desk and rail mount versions also. Actual mounting location should be dependent on intended use and desired reach.

Common sense should always prevail.

Wall Mounted

Total weight: 1.85kg
Same dimensions apply for all other versions



Mounting Options

These are DARAY's standard mounting options, and are all interchangeable.



Shown here are the hardwired special order mounting options, and are **not interchangeable**.



Image Gallery continued..

Wall Mounted
Order code: X740LW



X740LW supplied with plug-top transformer.

Hardwired Wall Mount with integral transformer
Order code: X740LE4



Transformer housed in box at base of neck. Box mounts directly to the wall.



Order code: X740LE1



Order code: X740LE2



Order code: X740LE3



Order code: X740LDS

Ceiling Mounted
Order code: X740LC



300mm ceiling tube extension feature



Digital control panel
Features: Power on/off
Light intensity adjustment
Colour temp adjustment

Removable autoclavable handle

Max. Height 1700mm



Left:
Mobile version
Order code: X740LM



Right:
Rail Mounted
Order code: X740LR
(shown here on XRAIL Medical Rail - available separately)